




WORLD  
triathlon

WORLD TRIATHLON  
DEVELOPMENT  
WEBINARS

STARTING SOON

asics

triathlon  
DEVELOPMENT

Brought to you by  TEXACO

Returning to events under the  
"new normality":

Venue Operations Provisions

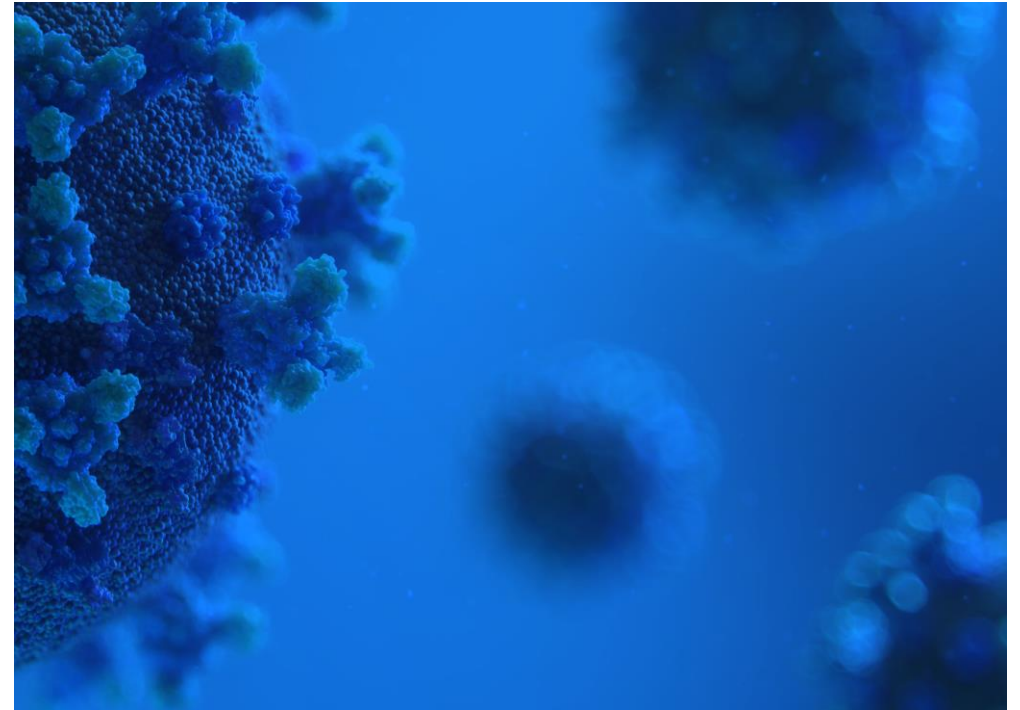
- Introduction

- Series of webinars

<https://education.triathlon.org/mod/page/view.php?id=6249>

- Housekeeping

- Q & A

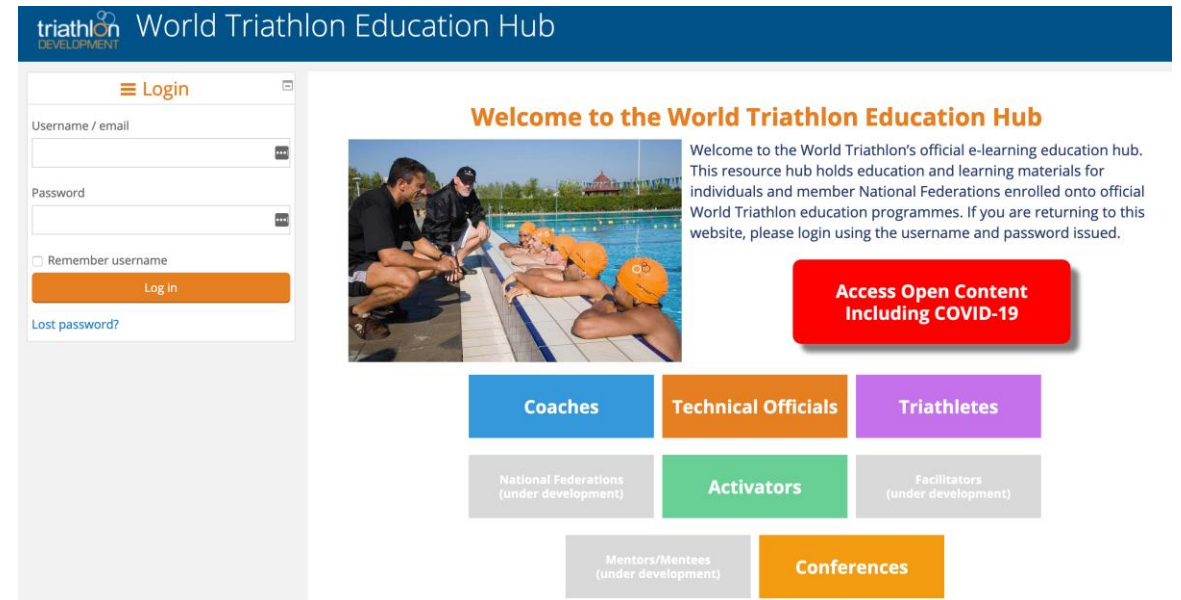


## General

- World Triathlon COVID-19 Prevention guidelines for EO (June 2020 version/ EN-ESP)

<https://education.triathlon.org/mod/page/view.php?id=6145>

- Medical Task Force among endurance sports' IFs
- Instructions on the implementation of the guidelines through our development webinars.



The screenshot displays the 'World Triathlon Education Hub' website. On the left is a login form with fields for 'Username / email' and 'Password', a 'Remember username' checkbox, a 'Log in' button, and a 'Lost password?' link. The main content area features a 'Welcome to the World Triathlon Education Hub' message, a photo of athletes at a pool, and a red button for 'Access Open Content Including COVID-19'. Below this is a grid of navigation buttons: 'Coaches' (blue), 'Technical Officials' (orange), 'Triathletes' (purple), 'National Federations (under development)' (grey), 'Activators' (green), 'Facilitators (under development)' (grey), 'Mentors/Mentees (under development)' (grey), and 'Conferences' (orange).



## The 5 pillars...

- social distancing
- reducing contact
- control/ screening of participants
- autonomy of the participants
- education



- Panel discussion



## Venue facilities - General

- All working spaces and provided facilities must be organised in a way that social distancing is respected.
- At the entrance of each tent/room, alcohol-based hand sanitisers must be available.
- In all the key accredited zones (athletes' area, VIP, media, working spaces), hand washing facilities must be provided.
- Provide disinfectant wipes and advise venue cleaning staff to disinfect door handles, toilet handles, bathroom faucet handles, etc. in all areas several times per day.



## Venue facilities - General

- Room doors must remain open if possible and if not should be managed by volunteers for not allowing the different clients touching the door handles.
- Closed bins for safe disposal of hygienic materials (e.g. tissues, towels, sanitary products) in all rooms must be provided.
- Participants are advised not to be bare feet when moving around the venue facility.





## Venue facilities - Toilets

- In the case of portable toilets, they should be spaced out and a queue system should be created for guaranteeing the social distancing. The LOC should provide plenty of sanitation options like hand wipes, sinks, or hand sanitizer immediately outside each portable toilet cluster. The toilets should be cleaned throughout the day at appropriate regular intervals according to the estimated number of users.



- Panel discussion

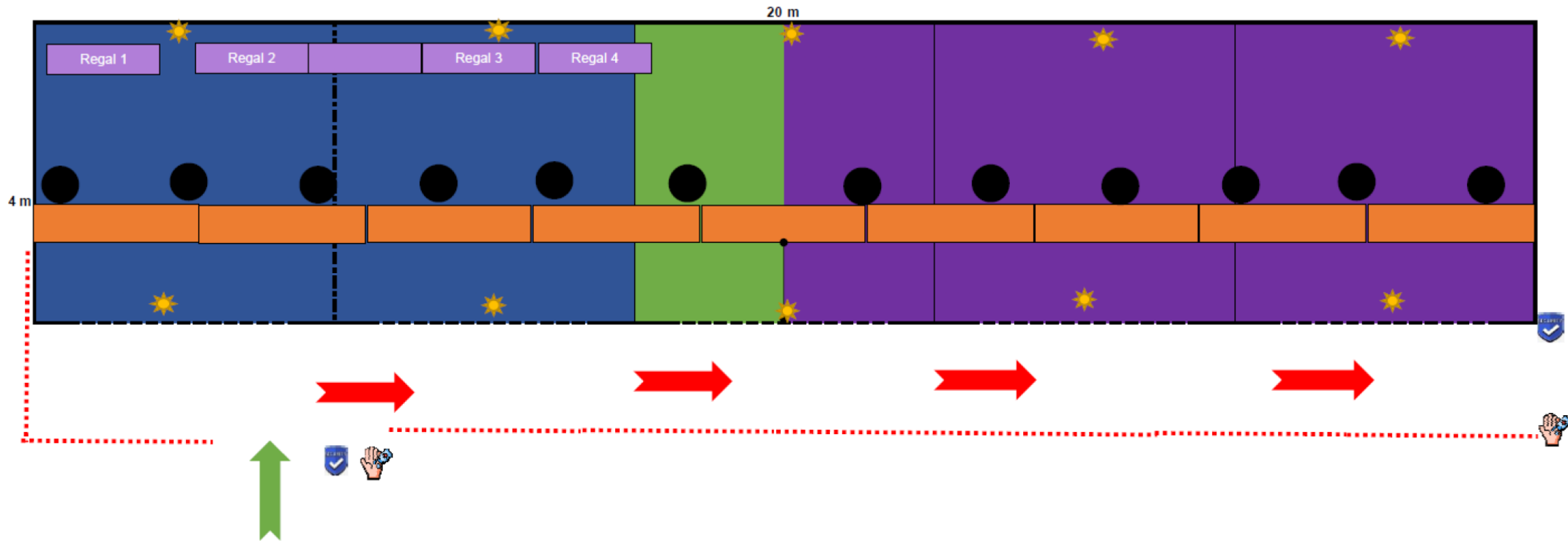


## Venue facilities – AG Registration

- The LOC must establish registration times in specific time slots according to numerical or alphabetical order.
- A distance of 2m between athletes must be respected inside the registration tent/room and at the waiting area outside the tent/room. The spacing must be marked on the floor by the organising committee.
- All volunteers managing the registration tent are strongly recommended to wear masks/ mouth-nose face covering.
- Athletes are advised to wear masks/ mouth-nose face covering during the registration process.
- A plexiglass panel should separate the volunteers from the participants at the registration desks.



## Venue facilities – AG Registration



## Venue facilities – Bag Drop off

- Volunteers are strongly recommended to wear a mask
- A distance of 2m between athletes must be respected inside the tent/room and at the waiting area outside the tent/room. The spacing must be marked on the floor by the organising committee.
- The athlete should place his/her bag/equipment in the disposable bag that is provided by the LOC. The disposable bag must be held by the volunteer and the athlete must not come in contact with the disposable bag at any time.
- For collection you must show your bib number and the volunteers will deposit it on the table.
- There will be delivery and collection times for the material for each range of bib numbers.
- Athletes are advised to wear masks/mouth-nose face covering during the registration process.



- Panel discussion

## Spectators' guide- Before the event

- Advise spectators to check for any signs of COVID-19 symptoms.
- Advertise that spectators may have a face mask with them at all times and bring any appropriate sanitation equipment necessary.
- Spectators must familiarise themselves with current government guidelines.
- Provide advice and guidance for spectators who wish to attend the event.
- If applicable make spectators aware that they may be temperature checked upon arrival to the event, however as access to the event is open, it is highly recommended spectators take their temperature prior to leaving home.
- Where possible, public transport should be avoided.



## Spectators' guide- Arrival at event

- Provide parking information, including a route from the car parking area to the event. When walking, spectators should adhere to social distancing and keep *the required social distance*.
- Road closures that are necessary for the course should be released prior to the event. This will help to ensure minimal crowd traffic, when moving from car parks to viewing areas.
- Those arriving via public transport should adhere to social distancing regulations (including maintaining distance and wearing a facemask) on all transport.
- Spectators should be advised to arrive early for the event to flatten the peak arrival period. to plan their route to and from the event site.



## Spectators' guide- During the event

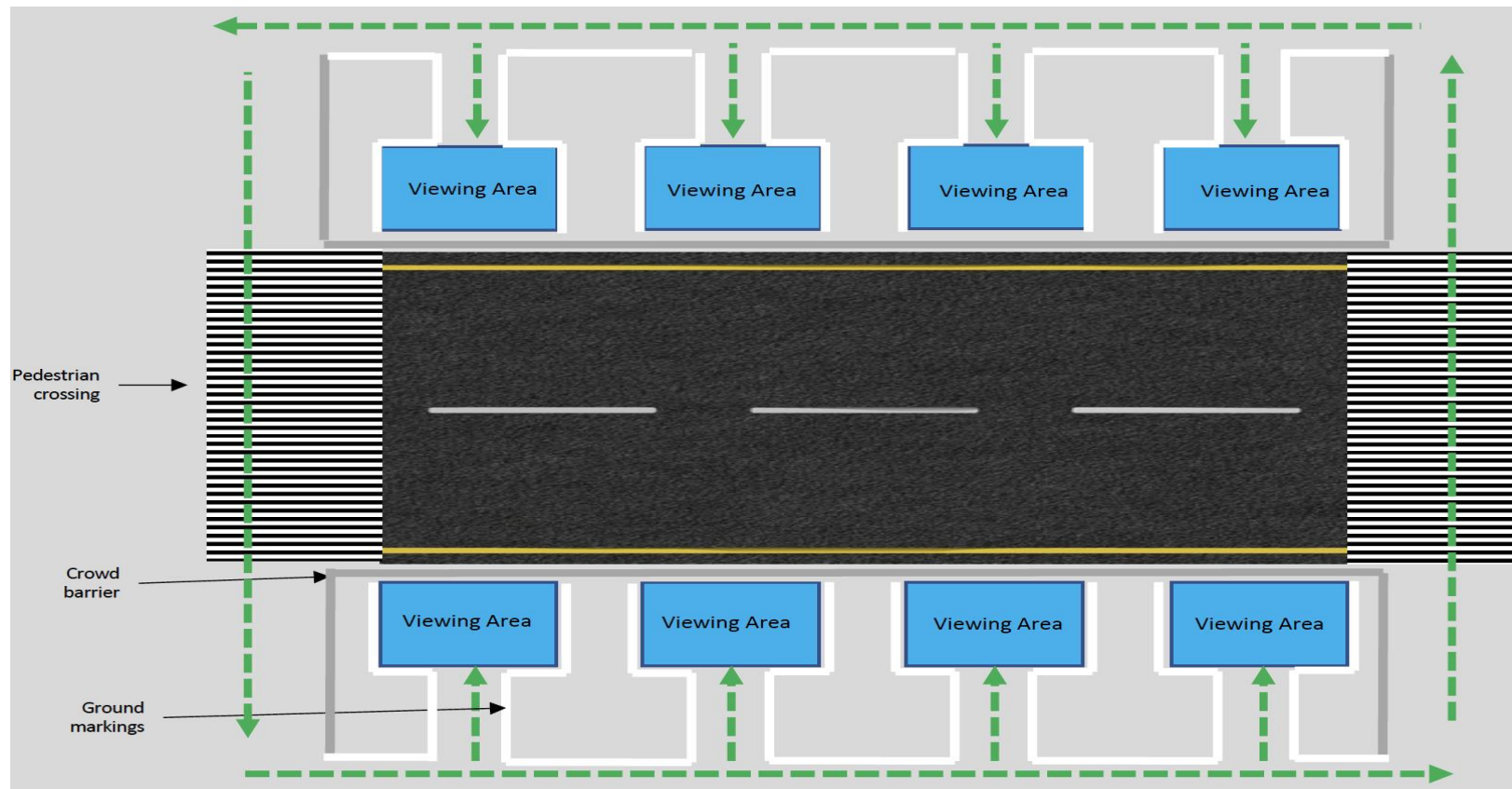
- Spectator facilities such as food concessions and toilets.
  - Floor markings
  - All payment transactions should be contactless-card.
  - Staff at food stalls or other stations should be equipped with protective masks and sanitation.
- Volunteers and staff should be located at all major access points on-site and in the central hub of the event site; they should be visible and provided with the appropriate PPE.
- Staff should have a good understanding of the course layout, first aid points and good viewing points where crowds are less dense. Spectators should be encouraged to follow instructions and guidance from stewards and volunteers at all times.



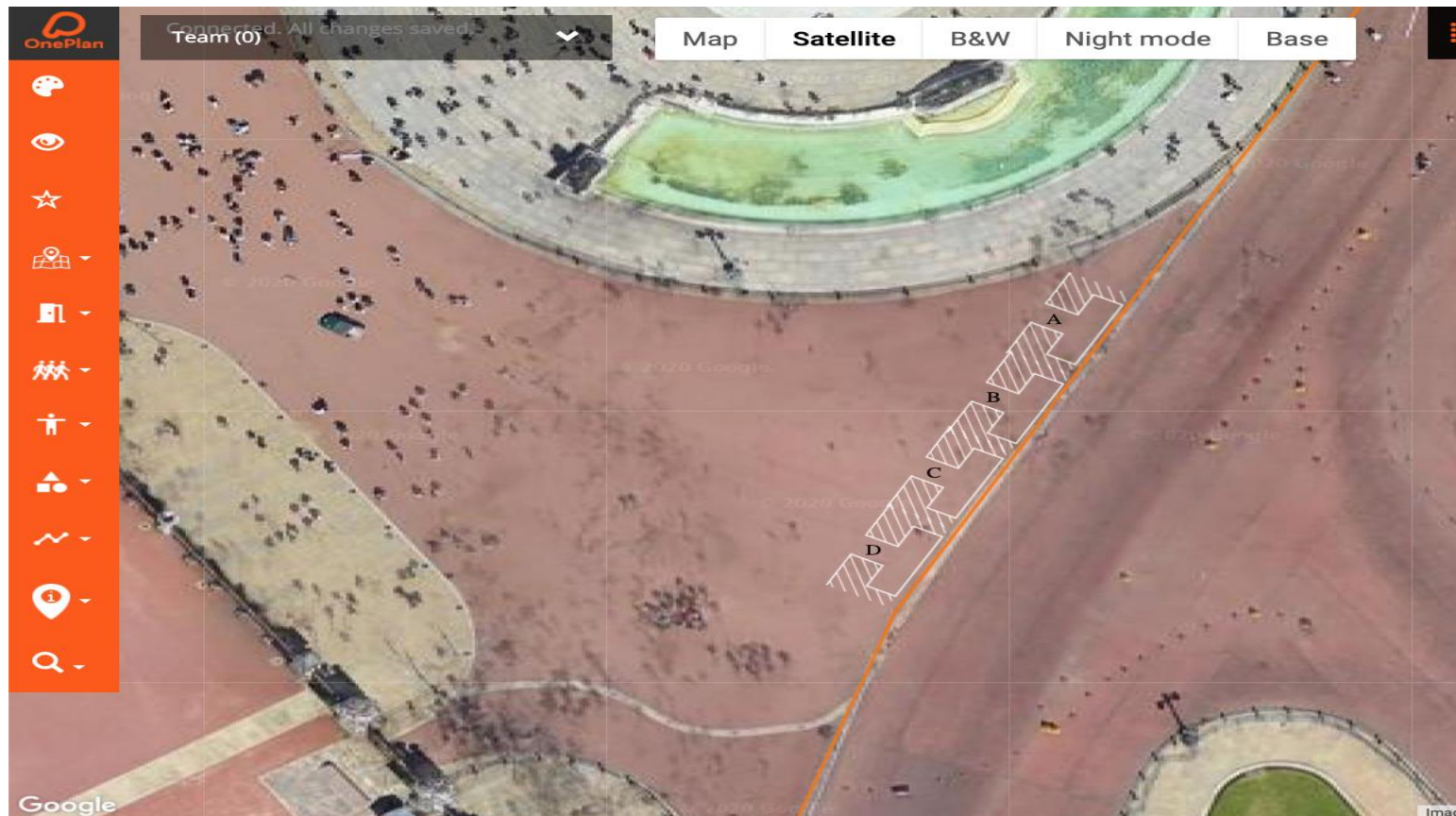
## Spectators' guide- During the event

- Medical and first aid points should be present throughout the course, however if feeling unwell with non-severe covid-19 related symptoms, spectators should be advised not to go to any first aid stand, but instead leave the event and return home.
- In the best viewing areas there will likely be higher footfall and potential for crowd congestion. To ensure safety measures are upheld, entrances to these areas should be restricted to a maximum capacity.

## Spectators' guide- During the event



## Spectators' guide- During the event





## Spectators' guide- Leaving the event

- Spectators should be advised to plan their route home prior to leaving the event and locate appropriate public transport routes.
- Stewards should be present to ensure appropriate distancing is maintained and to advise spectators of routes to transport hubs and car park areas.



- Panel discussion

# Q & A

Date	Time CEST	Topic	Language	Panel
29 July 2020	4:00:00 PM	Part 3: Returning to events under the "new normality": Venue Operations Provisions	Spanish	Enrique Quesada, Gustavo Neves,, Esteban Benitez
04 August 2020	12:00:00 PM	Part 4: Returning to events under the "new normality": Race Operation Provisions	English	Thanos Nikopoulos, Richard Belderok, Konrad Straube, Gergely Markus
05 August 2020	4:00:00 PM	Part 4: Returning to events under the "new normality": Race Operation Provisions	Spanish	Enrique Quesada, Felix Molina, Miguel Alejandro Fernandez Vazquez




WORLD  
triathlon

Thank you

asics

triathlon  
DEVELOPMENT

Brought to you by  TEXACO